



# Update on Horn of Africa Outbreak IMB Meeting 6 to 7 May London UK



# Presentation Outline

- Major developments in HOA since last IMB
- Epidemiology
- Program Response
- HOA outbreak Response: Progress to date
- Challenges & Remaining work

# PEI Developments in HOA since last IMB

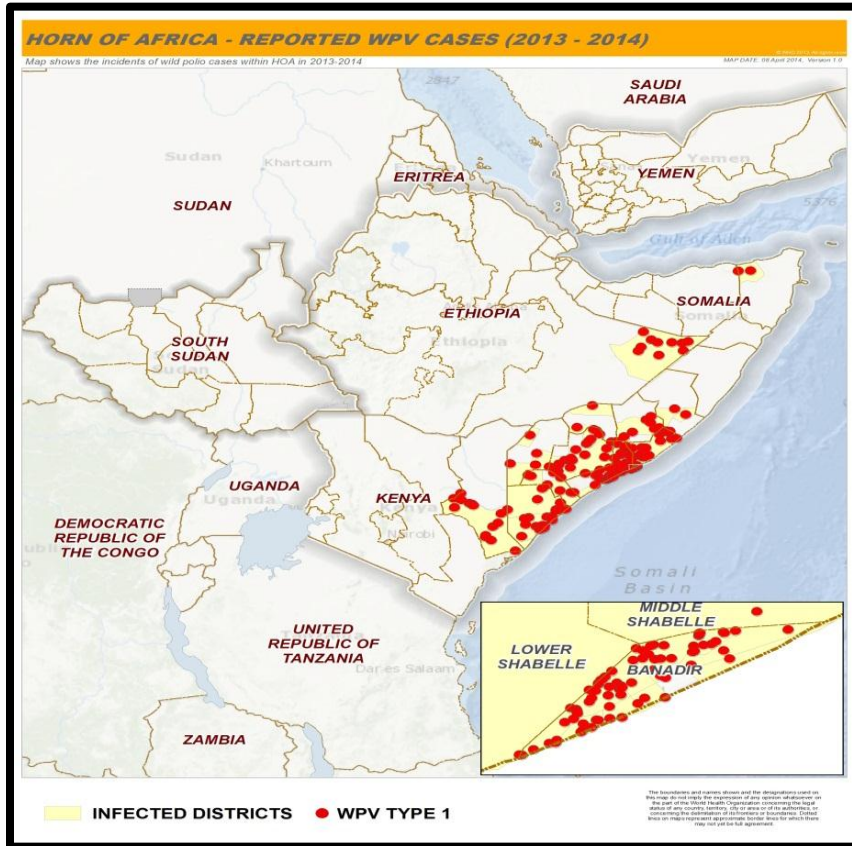
- HOA Coordination Office Established by RDs AFRO & EMRO
- Only one WPV in HOA in 2014 onset 05/01/14 Ethiopia
- No WPV in Kenya and Somalia since 14/07/13 and 20/12/13 respectively
- IPV used in outbreak response in Daadab refugee camps and host communities (3 Districts)
- Environmental Surveillance initiated in Kenya
- Polio Laboratory work load in KEMRI Kenya reduced; S. Sudan samples handled by UVRI lab in Uganda
- Communications researches conducted and findings in use.
- 3-Months Follow up outbreak Response assessments conducted in Kenya and Somalia

# **Epidemiology**

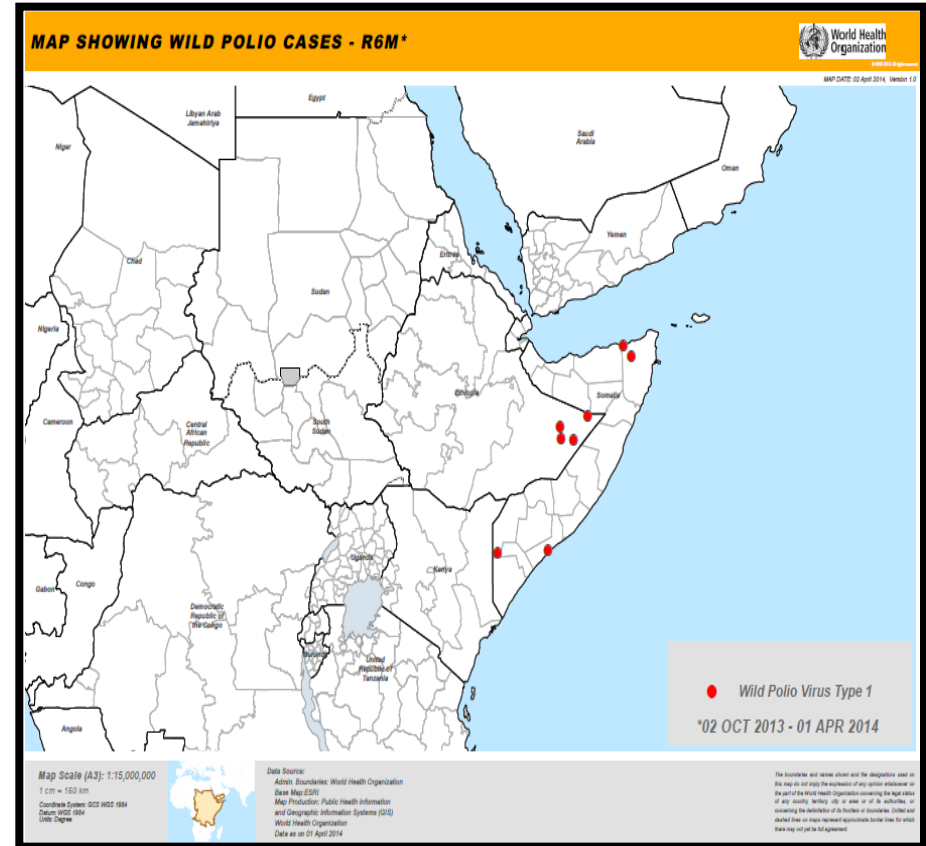
# WPVs HOA 2013 – 2014

As at 30 April 2014

## WPVs Reported 2013- 2014



## WPVs reported in recent 6-Months



**Somalia: 194 WPVs**

**Kenya: 14 WPVs**

**Ethiopia: 10 WPVs**

**Latest 20 Dec 2013 Bossaso dist, Puntland.**

**latest 14 July 2013 Dadaab Garisa County**

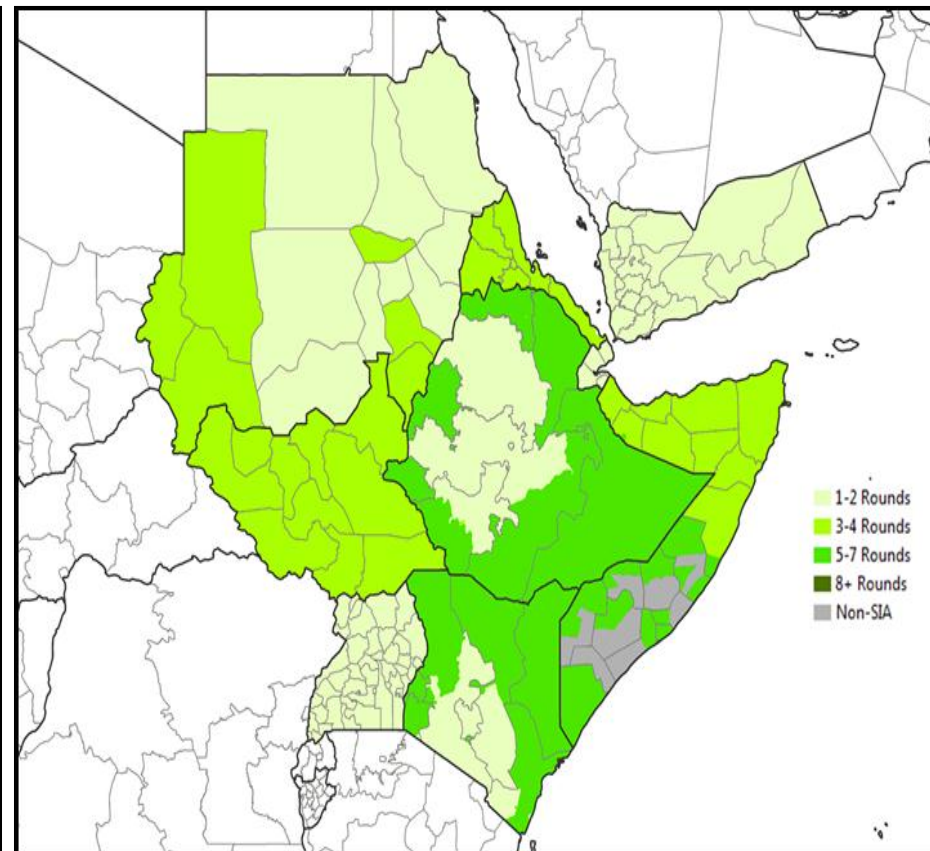
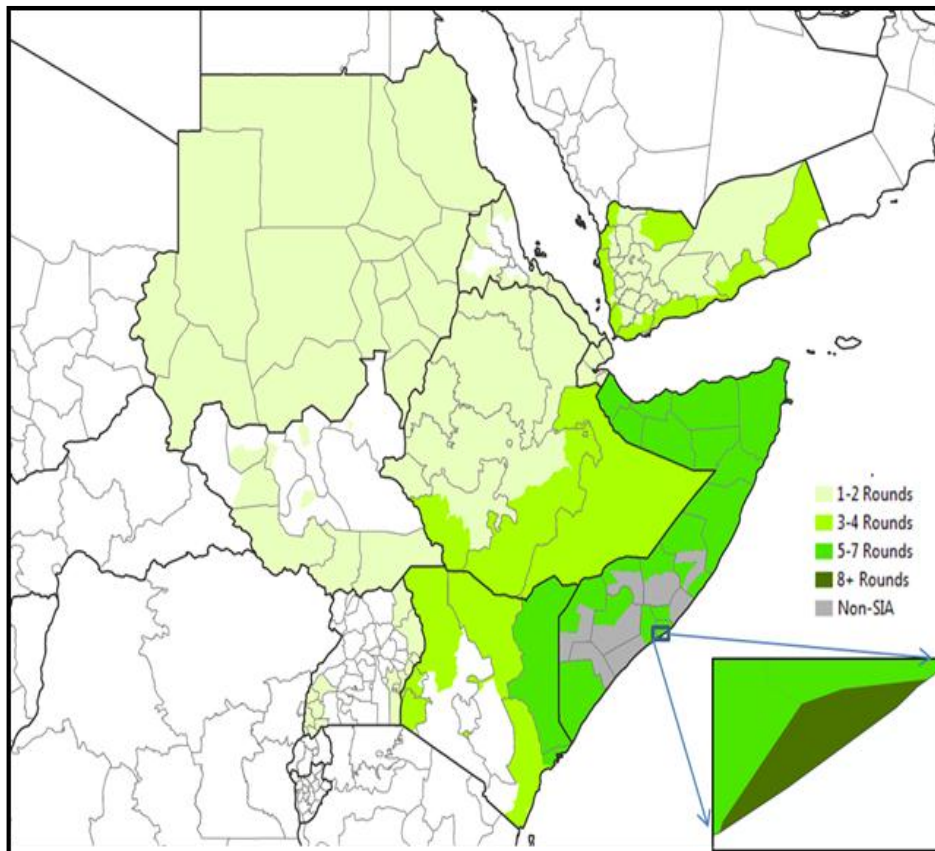
**latest 5 Jan 2014 Dolo Wader Zone, Somali Region**

# **Program Response**

# HOA Outbreak SIAs - Phase 1 and 2

**Phase 1 May to Oct 2013**

**Phase 2 Nov 2013 to Apr 2014**



# SIAs Conducted in Response to outbreak

## Number of SIAs since Index case:

- **Somalia:** 9 NIDs, 3 SNIDs, 3 SIADs Bari Region and 1 CHD each in Somaliland, Punt land and All accessible South Central Zones at different times.
- **Kenya:** 2 NIDs, 5 SNIDs and 1 Mop-up around
- **Ethiopia:** 2NIDs, 6 SNIDs, 1 Mop-Up and 1 initial emergency round in refugee camps in Dollo Ado & host community
- **SIAs since last case in Ethiopia onset 05/01/14\*:**  
2 SNIDs January and March 2014
- **Other 6 HOA Countries** conducted between 1 and 4 SIAs. Tanzania not planned for.



# Strategies used to improved Response[1]

- Continuous review and updating of operational micro plans (Including validation in Somali Region - Ethiopia)
- Re-deployment of additional staff to highest risk areas with more rigorous training and supervision
- Establishment of Control rooms at National, Somali Region and Dollo Zone of Ethiopia
- Initiation of environmental surveillance in Kenya with 4 sites in Nairobi.
  - **One environmental sample harvested in Oct 2013 positive for WPV linked to Somalia**
  - Comprehensive plan developed after pilot and submitted for funding

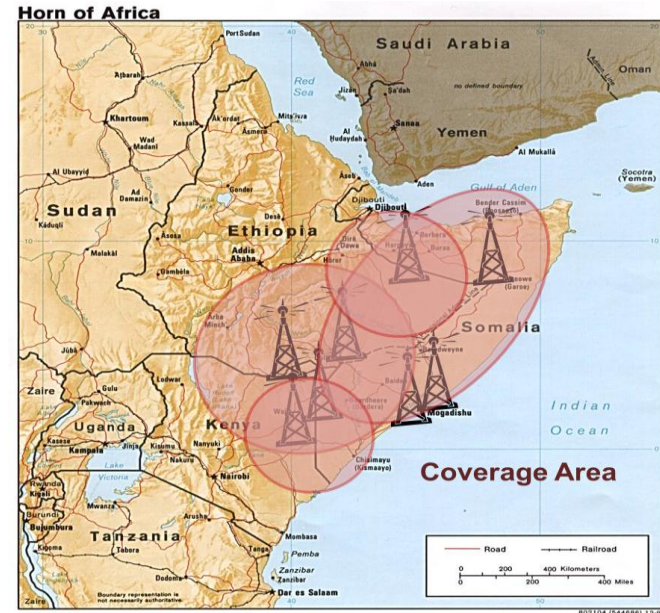
# Strategies used to improved Response[2]

- Pre-positioning of vaccines, funds and personnel in proximity to the insecure areas in S/C Somalia
- Use of Short Interval Administration Dose (SIADs) 4 rounds in any newly opened areas in SC Somalia
- Vaccination of expanded age groups mostly up to 15 years but occasionally adults.
- Use of IPV in Dadaab camps and immediate host communities
- Use of permanent transit points to capture mobile and transiting populations in Somalia initially and recently in Ethiopia too.



# Leveraging Best Practices in the Horn of Africa

- Mobile Population Research / Tracking (initiated)
- Social Mobilization Tools and Formats for Somali population (Somalia, Kenya, Ethiopia)
- Communication Platforms (BBC Somali Service, VoA Somali) reaching across the borders
- Utilizing Clans Structures & other relevant social approaches (cattle brokers as “entry points”)
- Strengthening AFP community surveillance through communication
- Integration with WASH and nutrition programmes in high-risk areas



Every child should receive multiple doses of polio vaccine!



# **Quality of SIAs in Outbreak Countries**

# Ethiopia IM By Zone and Round, 1<sup>st</sup>-6<sup>th</sup> Round, 2013-14

June 2013 SIA:  
IM (% Finger-marked)

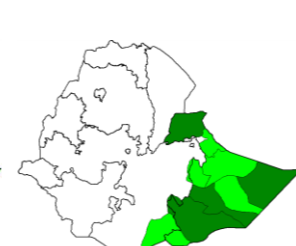
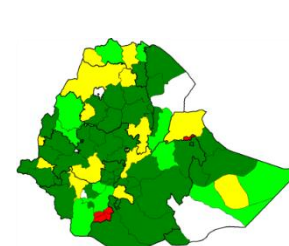
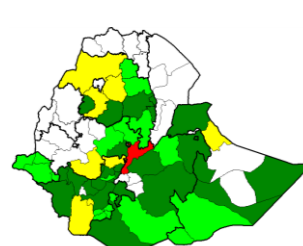
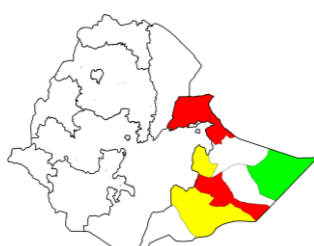
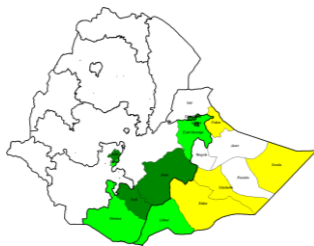
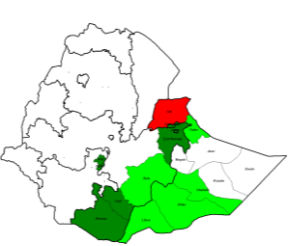
July 2013 SIA:  
IM (% Finger-marked)

Aug/Sept 2013 SIA:  
IM (% Finger-marked)

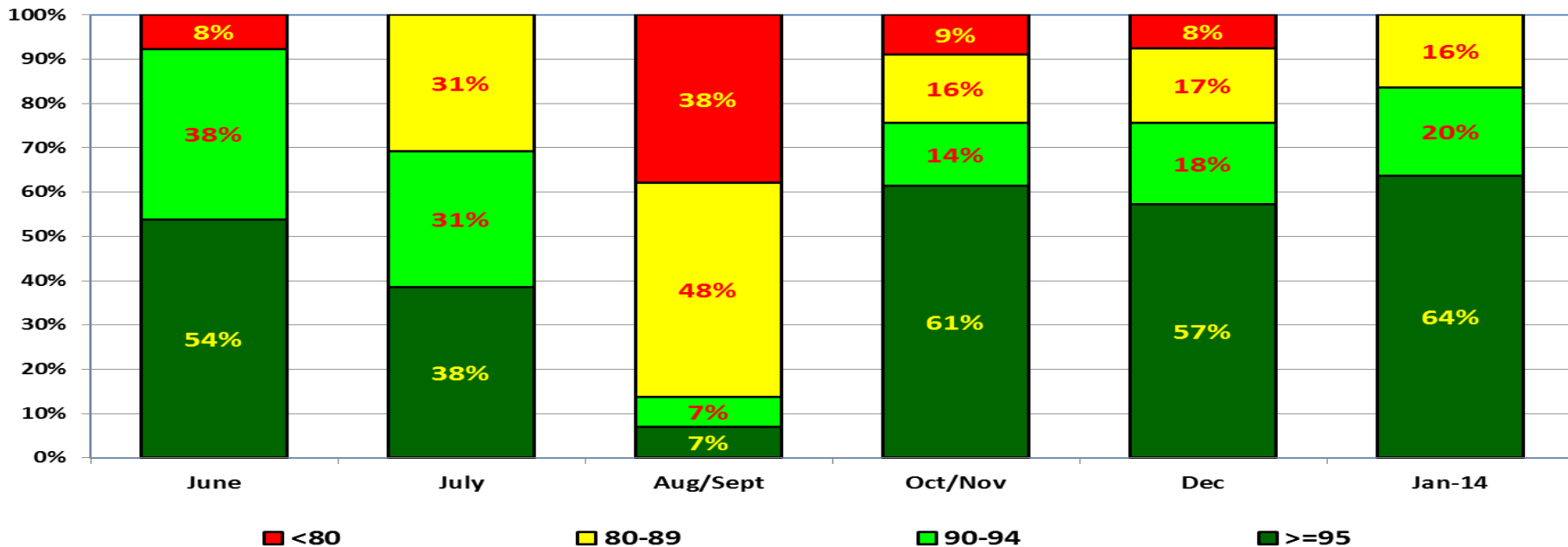
Nov 2013 SIA:  
IM (% Finger-marked)

Dec 2013 SIA:  
IM (% Finger-marked)

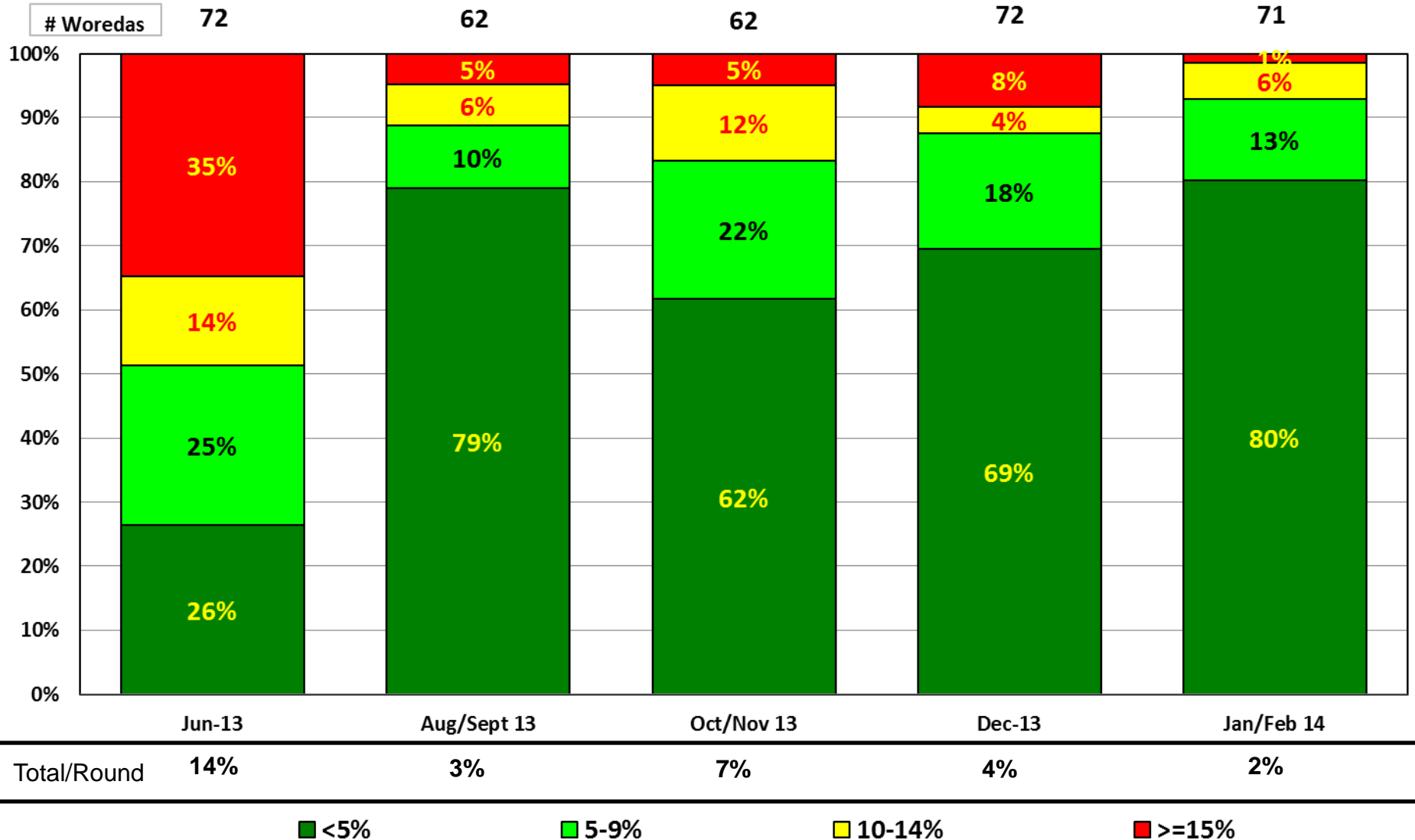
Feb 2014 SIA:  
IM (% Finger-marked)



## District Performance, SIAs 2013-14 (Source: IM data)

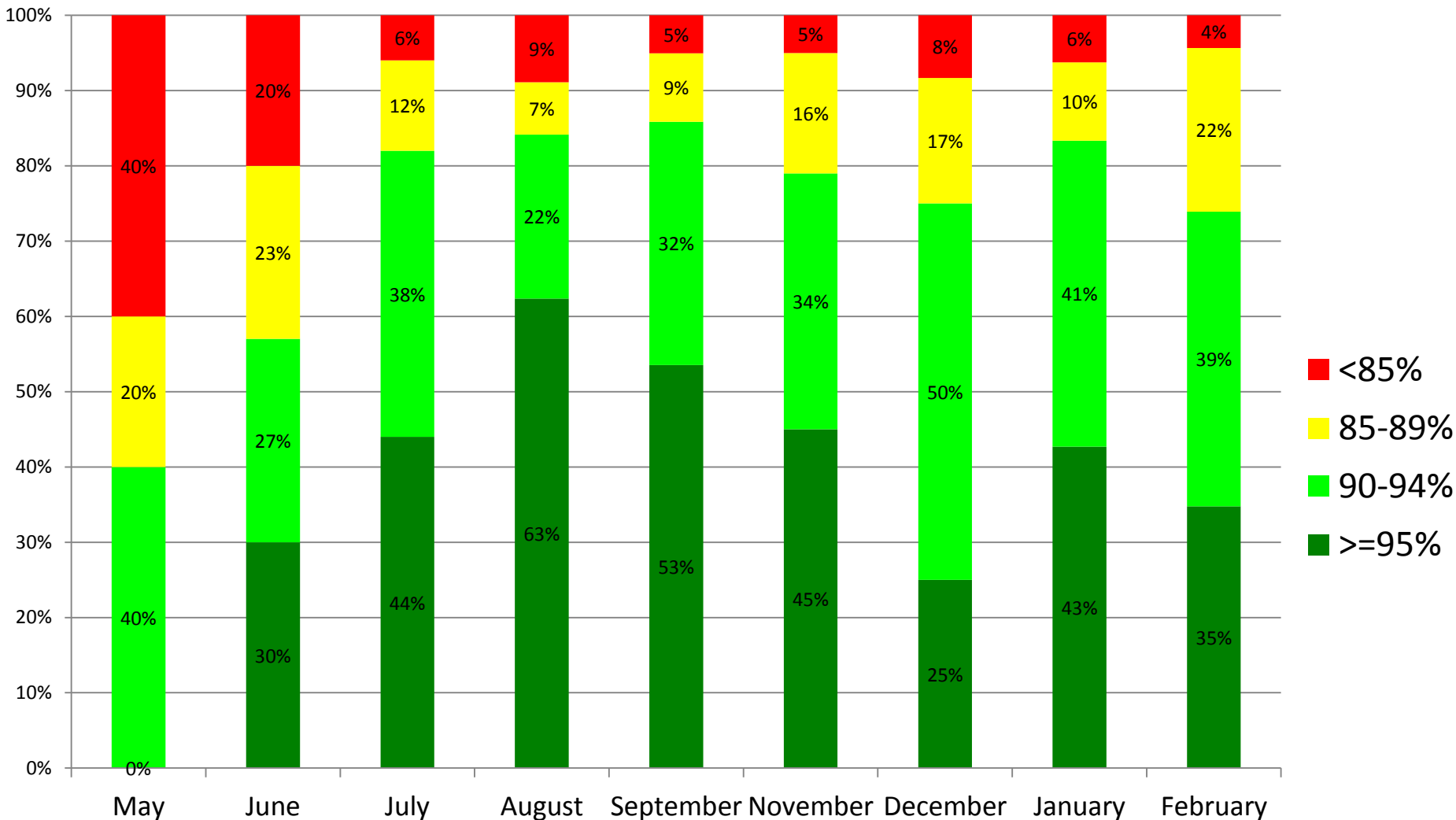


# Trend in Zero Dose SIA Children, Somali Region, June 2013 – February 2014



# Kenya: IM Achievement: Proportion of Districts

## May 2013-Feb 2014





# Monitoring Progress

- Regular HOA TAG meetings Latest Feb 2014
- 3-Monthly assessment of the outbreak response
- Quarterly updates on status of implementation of TAG and 3 Months assessment recommendations.
- Biweekly partner coordination meetings
- Bimonthly TC HQ/AFRO/EMRO/HOA outbreak countries
- Weekly HOA polio outbreak status update
- Technical HOA monthly bulletin
- Quarterly Donor bulleting as per request at the Nov 2013 donor briefing

# ***Overall 3-Months Assessment Conclusions***

## ***Kenya 3-Months follow up Assessment March 2014***

- Commends strong outbreak response, including use of IPV and believes that with present level of commitment outbreak can be stopped. **However, there is high risk of re-importation.**
- Many recommendations from 1st outbreak assessment implemented. **However recommendations related to micro-planning, training, nomadic population, permanent vaccination points and surveillance need to be fully implemented.**

## ***Somalia 3- Months Follow up assessment April 2014***

- Outbreak appears to have slowed down. **However, there is significant risk of continued transmission particularly in inaccessible and remote areas**
- Most of recommendation from previous assessment have been implemented, beginning immediately after last assessment. **However, there is need to use data more for action at field level**

# **Challenges and Work left**

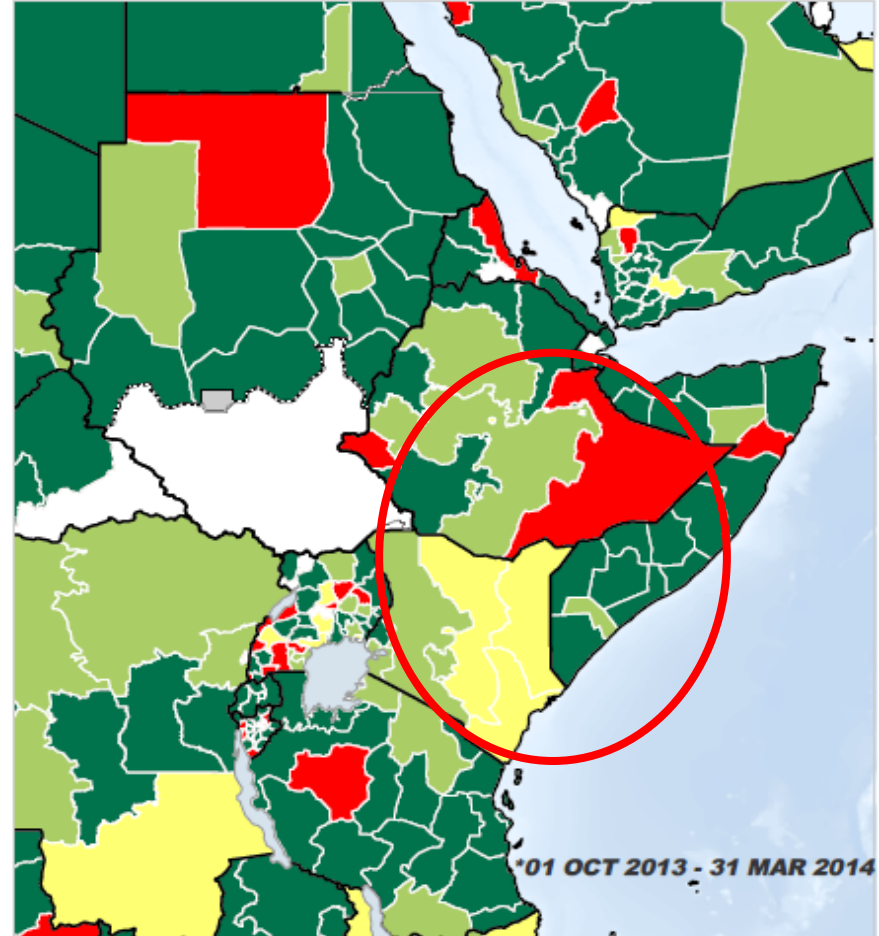
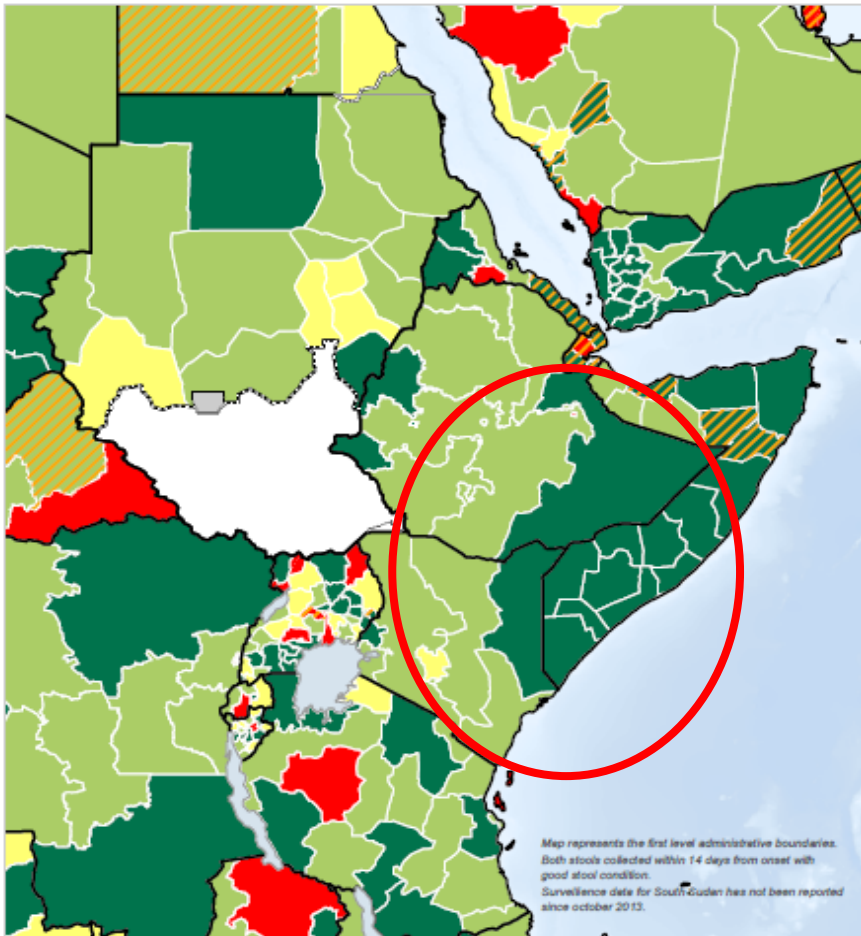
# Sub-Optimal Surveillance indicators

MAP SHOWING SUB-NATIONAL NON POLIO AFP RATE & STOOL ADEQUACY PERCENTAGE - R6M\*

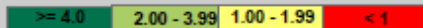


© WHO 2014. All rights reserved.

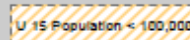
MAP DATE: 03 May 2014, Version 1.2



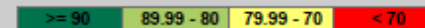
## NPAPF RATE



No shape files or population data or no reporting



## STOOL ADEQUACY



# Key Challenges

- Ensuring high quality surveillance at sub-national level.
- Improving the quality of SIAs particularly in the hard to reach insecure and inaccessible areas when opened.
  - Over 500,000 children (<5yrs) still inaccessible in S/C Somalia
- Achieving cross border synchronization of activities in a dynamic security situation and a highly mobile population
- **Balancing between the Epidemiologically plausible interventions and availability of resources vaccine and finances.**
- Addressing the population immunity gap due to low Routine Immunization.
- Ensuring close collaboration among the key partners supporting the HOA outbreak response.
  - **Avoid complacency and premature reduction of response activities**

# Way Forward

- **Sustain the HR that has been put in place for the outbreak response.**
- Continue intensified SIAs in all accessible areas of Somalia, Somali Region of Ethiopia and N/Eastern Kenya
- Sustain and where applicable expand the permanent vaccination posts in Both Somalia and Ethiopia
- Ensure preparedness to conduct SIADs in any newly accessible districts in S. Central Somalia
  - Prepositioning vaccines, equipment and finances
- Address the sub-optimal surveillance especially in the highest risk areas
- For sustainability continue to explore avenues to rapidly improve Routine Immunization in the HR areas

# Summary

- Only 1 WPV so far in HOA 2014
- Need for sustained aggressive response activities considering the threat posed by the 500,000 inaccessible children in S. Central.
- Need to sustain the HR put in place for outbreak going forward
- Permanent vaccination posts and preparedness to vaccinate in the inaccessible areas of S. Central Somalia will be key to stopping transmission



**THANK YOU**

